



# ORGANIZATION

**PHILIP MORRIS MANAGEMENT CORP.**  
**CORPORATE GOVERNMENT AFFAIRS**  
WASHINGTON, D.C.

## NUMBER

PMMC 2.8.2

## DATED

7-1-95

## REPLACES

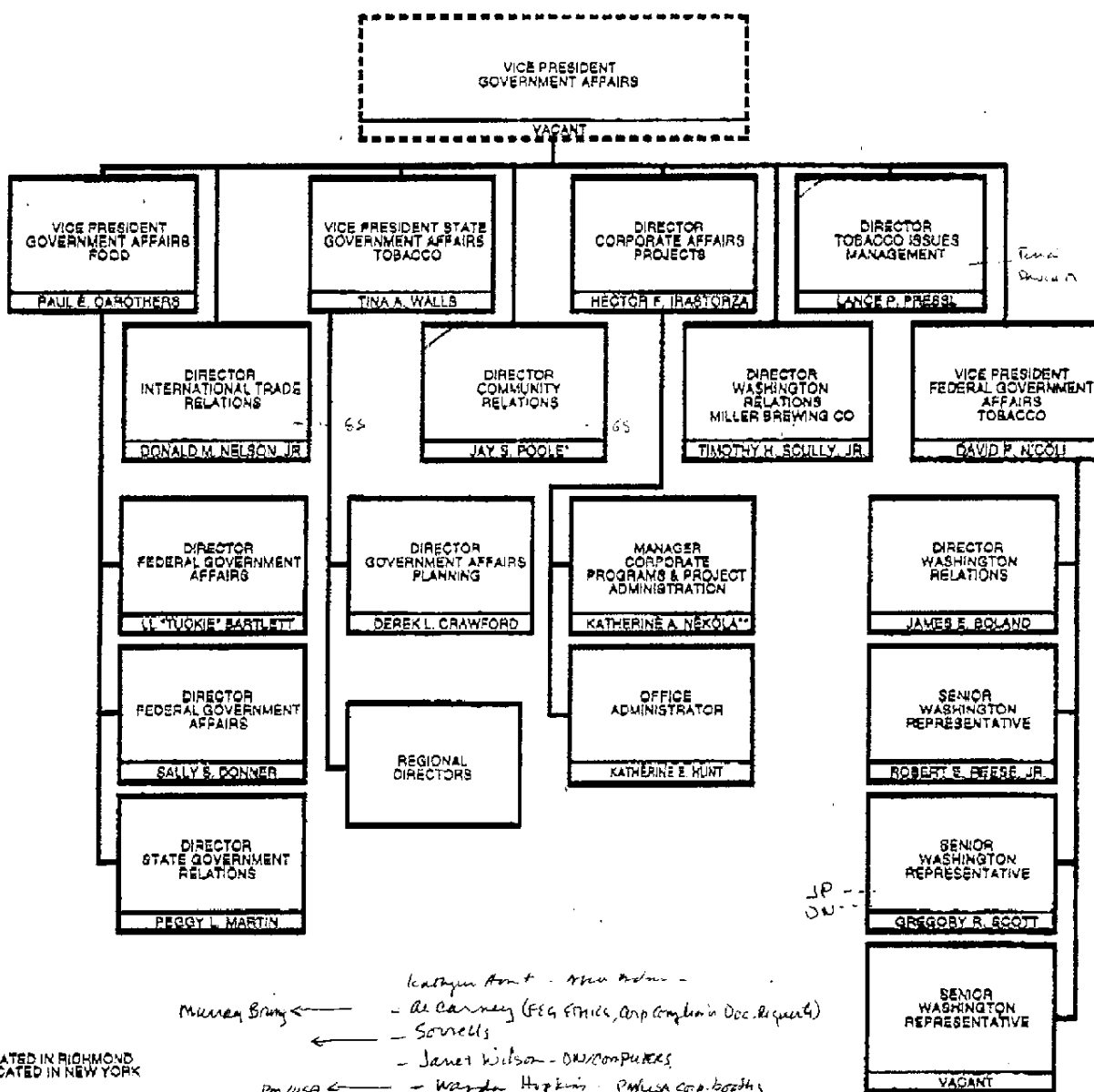
PMMC 2.5.2

## DATED

2-1-95

REPORTS TO  
SENIOR VICE PRESIDENT  
CORPORATE AFFAIRS  
PHILIP MORRIS COMPANIES INC.

STEVEN C. PARRISH



\* LOCATED IN RICHMOND  
\*\* LOCATED IN NEW YORK

NOTE: DOTTED LINES INDICATE A DIRECT REPORTING RELATIONSHIP TO PM COMPANIES INC. AND AN INDIRECT RELATIONSHIP TO PM MANAGEMENT CORP.

COMP A57(3)

2046945449

**ORGANIZATION****PHILIP MORRIS MANAGEMENT CORP.****LEGAL/EXTERNAL AFFAIRS****NEW YORK****NUMBER**

PMMC 2.0

**DATED**  
7-1-95**REPLACES**  
PMMC 2.0**DATED**  
2-1-96REPORTS TO  
CHAIRMAN OF THE BOARD  
AND CHIEF EXECUTIVE OFFICER  
PHILIP MORRIS COMPANIES INC.

GEOFFREY C. BIBLE

EXECUTIVE VICE PRESIDENT,  
EXTERNAL AFFAIRS AND GENERAL COUNSEL  
PHILIP MORRIS COMPANIES INC.

MURRAY H. BRING

SEE SEPARATE CHART  
(PMMC 2.3)SENIOR VICE PRESIDENT  
LITIGATION  
& DEPUTY GENERAL COUNSEL  
PHILIP MORRIS COMPANIES INC.

CHARLES R. WALL

SENIOR VICE PRESIDENT  
CORPORATE AFFAIRS  
PHILIP MORRIS COMPANIES INC.

STEVEN C. PARRISH

SEE SEPARATE CHART  
(PMMC 2.5)SENIOR VICE PRESIDENT  
& GENERAL COUNSEL  
PHILIP MORRIS  
INTERNATIONAL INC.

LEE POLLAK

SEE SEPARATE CHART  
(PMMC 2.2)SENIOR VICE PRESIDENT  
& GENERAL COUNSEL  
PHILIP MORRIS USA

DENISE F. KEANE

SEE SEPARATE CHART  
(PMMC 2.1)SR. VICE PRESIDENT  
WORLDWIDE  
REGULATORY AFFAIRS  
& ASSOCIATE GENERAL  
COUNSEL  
PHILIP MORRIS  
COMPANIES INC.

MARC S. FIRESTONE

SEE SEPARATE CHART  
(PMMC 2.7)SR. VICE PRESIDENT,  
GENERAL COUNSEL &  
SECRETARY MILLER  
BREWING COMPANY

WILLIAM G. SCHMUS

SR. VICE PRESIDENT &  
GENERAL COUNSEL  
KRAFT FOODS, INC.

CALVIN J. COLLIER

VICE PRESIDENT &  
GENERAL COUNSEL  
KRAFT FOODS  
INTERNATIONAL INC.

EDWARD J. MOY

VICE PRESIDENT &  
ASSOCIATE GENERAL  
COUNSEL  
HUMAN RESOURCES

ERIC A. TAUBSIG

SEE SEPARATE CHART  
(PMMC 2.4)SR. ASSISTANT  
GENERAL COUNSEL  
PHILIP MORRIS  
COMPANIES INC.

ROGER G. WHODEN

VICE PRESIDENT &  
ASSOCIATE GENERAL  
COUNSEL  
WASHINGTON  
RELATIONS

ALFONSO L. GARNEY, JR.

GENERAL COUNSEL AND  
SECRETARY PM  
CAPITAL CORP.

JOHN S. SAVAGE

SEE SEPARATE CHART  
(PMMC 2.6)VICE PRESIDENT,  
ASSOCIATE GENERAL  
COUNSEL &  
CORPORATE  
SECRETARY

G. PENN HOLSSENBECK

SEE SEPARATE CHART  
(PMMC 2.8)DIRECTOR LEGAL  
ADMINISTRATION &  
ASSISTANT  
SECRETARY

COLLEEN D. FUNN

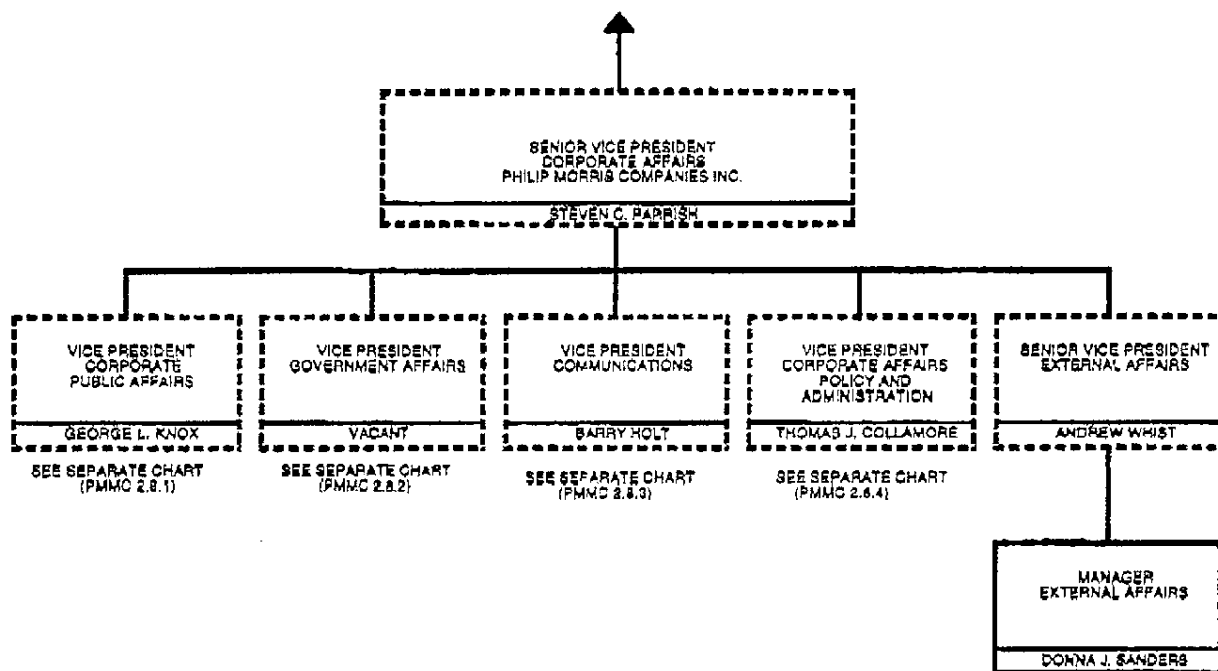
\*LOCATED IN RYE BROOK

- REPORTS DIRECTLY TO G. PENN HOLSSENBECK FOR ASSISTANT SECRETARY ACTIVITIES.

NOTE: DOTTED LINES INDICATE A DIRECT REPORTING RELATIONSHIP TO PM COMPANIES AND AN INDIRECT RELATIONSHIP TO PM MANAGEMENT CORP.

**ORGANIZATION****PHILIP MORRIS MANAGEMENT CORP.****CORPORATE AFFAIRS****NEW YORK****NUMBER****PMMC 2.8****DATED****7-1-95****REPLACES****PMMC 2.5****DATED****2-1-95**

REPORTS TO  
EXECUTIVE VICE PRESIDENT,  
EXTERNAL AFFAIRS AND GENERAL COUNSEL  
PHILIP MORRIS COMPANIES INC.  
MURRAY H. BRING



NOTE: DOTTED LINES INDICATE A DIRECT REPORTING RELATIONSHIP TO PM COMPANIES INC. AND AN INDIRECT RELATIONSHIP TO PM MANAGEMENT CORP.